



WHY SAINT LUCIA FOR OUTSOURCING?

- BPO & KPO Opportunities in financial technology, legal, web, real estate, architecture & medical services
- Cultural affinity to North America
- Strategic nearshore location & convenient time zone UTC/Mountain Time 4
- Cost effective labour
- English-speaking, easily trainable workforce
- Scalable free access to OECS labour pool of 300,000
- Free and stable economic and political climate
- Strong Government support of investment initiatives
- Strong telecommunications network and supporting ICT infrastructure
- Strong track record of contact centre facilitation
- Free repatriation of profits

ACCESS

- Two Airports - International (UVF) and Regional (SLU)
- Easy access via daily and weekly international flights to the USA, Canada and the UK with connections to South American gateways



Venezuela

STEADY & GROWING BPO/ICT INVESTMENT

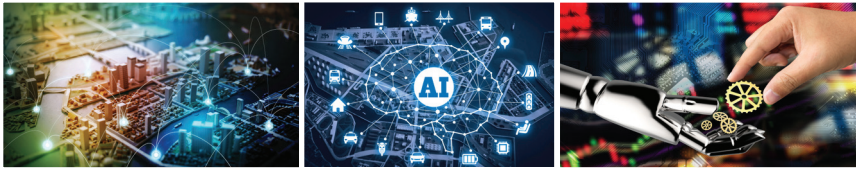


QUICK FACTS

Labour force	102, 364
Unemployment	20.2%
Youth unemployment	38.5%
Inflation Rate	0.1%
GDP (USD)	1,329.6 Million
Currency	Eastern Caribbean Dollar (XCD) (XCD 2.70 Pegged to USD 1.00)

HOME TO INNOVATION

Saint Lucia has become the first Caribbean island to incorporate Artificial Intelligence into its economy. Ojo Labs has established its AI training/ Call Center operation in Vieux-Fort, Saint Lucia. The company has cited Saint Lucia's skilled work force as the driving force in its establishment on island.



TELECOMMUNICATIONS FRAMEWORK

- Internet Penetration 88% (2018)
- Multi-path redundant network using Caribbean Crossing System
- Saint Lucia Internet Exchange (SLIX)
- Most advanced multi-ring system in the region (Fibre & EC link)
- International submarine fibre connectivity: ECFS
- Length of system: 1440 Km
- Fibre count: (6) Fibre pair
- Fibre types: SMF (Single More Pure Silica) on Repeaterless
- Number of segments: 14
- Longest DLS: 16 ms
- Current LIT capacity: 200 Gbits/s
- Current EOL (End of life) Capacity: 1.1 Tbits/s

+1 (758) 457 3400 | info@investstlucia.com
www.investstlucia.com